

THE MURROUGH WATERFRONT PARK ENHANCEMENT



DESIGN STATEMENT
PART 8 PLANNING APPLICATION

PREPARED FOR
WICKLOW COUNTY COUNCIL
JANUARY 2024

CUNNANE STRATTON REYNOLDS
LAND PLANNING & DESIGN



CONTENTS

02 CONTENTS

03 INTRODUCTION

ANALYSIS

04 HISTORICAL & CULTURAL HERITAGE

05 ECOLOGICAL & NATURAL HERITAGE

06 CIRCULATION - ACTIVE & PUBLIC TRANSPORT

07 CIRCULATION - PRIVATE VEHICLES & PARKING

08 SITE CHARACTER ASSESSMENT

10 OPPORTUNITIES & CONSTRAINTS

11 EXISTING SITE LAYOUT

DESIGN

12 DESIGN STRATEGY

13 DESIGN INFLUENCES

14 PROPOSED LAYOUT

15 SITE OVERVIEW

16 ZONE A

19 ZONE B

22 ZONE C

25 ZONE D

28 MATERIALS AND FINISHES PALETTE

29 STRUCTURES

30 PLANTING PALETTE

32 LIGHTING STRATEGY

ACCOMPANYING DRAWINGS

24272-2-101 - Site Location Map

24272-2-110 - Existing Site Layout

24272-2-111 - Landscape Layout

24272-2-201 - Landscape Sections

24272-2-901 - Viewing Platform Details

24272-2-911 - Toilet Facilities & Shelters Details

24272-2-921 - Performance Pavilion Details



Brief

Wicklow County Council appointed a design team led by Cunnane Stratton Reynolds, Landscape Architects and Town Planners with Roughan & O'Dovan Consulting Engineers to develop a proposal for improvements and enhancements to the existing waterfront park located in the Murrough, Wicklow Town, County Wicklow.

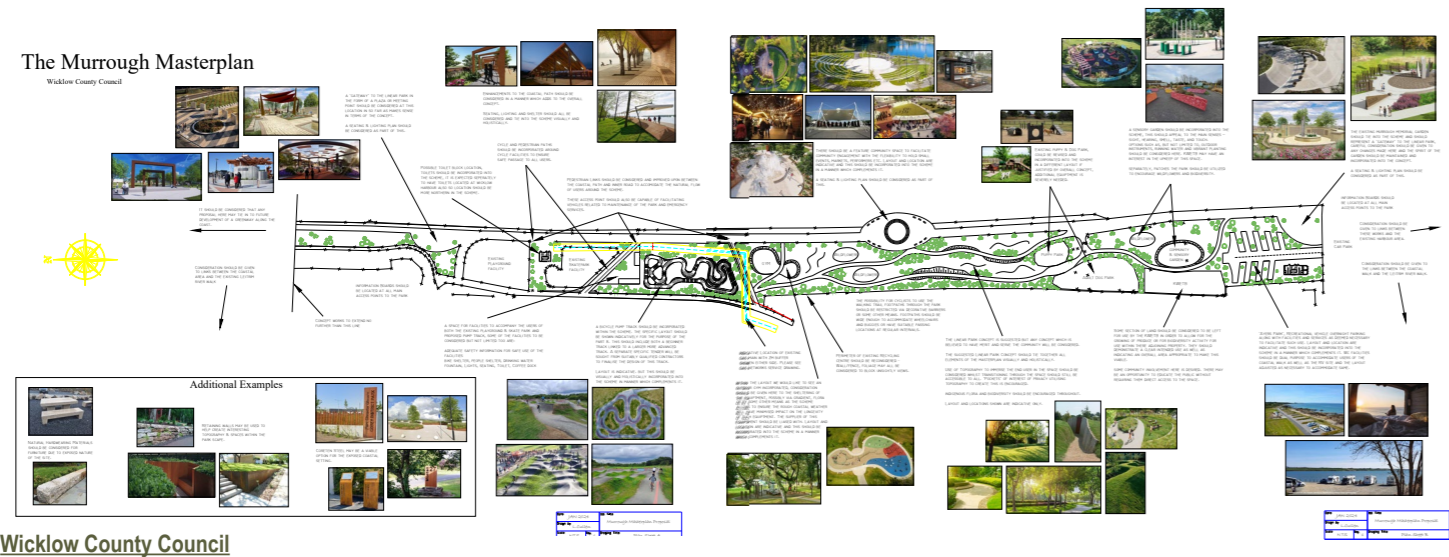
*The brief is quite clear about the primary objective of the project:
“to develop a Park Masterplan to deliver a sustainable vision for The Murrough in the face of population growth and increasing levels of community participation in active leisure..”*

The brief sets out a detailed range of facilities and elements to be provided / accommodated in the site derived from analysis and design work to date including a conceptual plan. The brief acknowledges the unique context, potential and sensitivities of the site, its valued characteristics as well as its potential to be enhanced with the right approach to design development.

Key issues highlighted include the Murrough ecology (and its environs), access, gateway/entrances, the coastal promenade, toilet provision, connectivity, landscape development – enhancing space and variation through planting and topography, enhanced biodiversity, history/heritage, balancing existing recreational uses and informal recreation, sustainability, parking and access, events opportunities/spaces, residential amenity and resolving conflicts.

A range of other community facilities are also identified including a bicycle pump track, shelters, water fonts, lighting, seating, bike parking, provision for recreational vehicles, outdoor gyms, consideration of the existing dog park as well as gardens, teaching spaces and plazas.

The brief indicates the importance of the integration of these into a cohesive whole and our masterplan below sets out a vision to spatially arrange the park and its components in a unified landscape with varied spaces, enhanced connectivity and offering a diversity of experiences encouraging a diverse range of visitors. The brief also highlights the importance for the vision to be inspiring, robust and flexible allowing its adoption by the community, and implementation and change over a number of years.
The project deliverable is the submission of a successful planning application for the masterplan through the Part 8 process. This report and accompanying drawings is the culmination of that process.



Design Objectives

Placemaking sits at the core of this project. While the existing Murrough Park sees a significant number of users on a daily basis - few of these would consider the site a destination. The primary goal of the proposal is to alter this - to make the Murrough Waterfront Park a place people intrinsically want to go and to linger – an important enhanced coastal asset for the growing town of Wicklow. The design team have developed the proposals below around this goal which will be achieved as a result of:

- A focus on integrating the necessary facilities into a connected series of spaces which contribute both to their primary purpose but also the greater whole of the park.
- Ensuring that while adequate space is provided for the various specific facilities, consideration is also given to unstructured open space with flexibility of use.
- Using a strong design language influenced by the local environment and heritage to envision a memorable and inspiring destination.
- Considering the likely future development of the surrounding town and wider community of current and potential users.
- Proposals to reflect the exposed and coastal nature of the site and the potential for extreme weather events in an exposed climate – salt winds, coastal over-topping / flooding, extreme winds.

The above to be reflected in the robustness, constructability and likely maintenance requirements of materials and planting at this location.

Approach & Methodology

Wicklow County Council appointed a design team led by Cunnane Stratton Reynolds, Landscape Architects and our approach and methodology applies the following process:

- Understanding and developing the brief and the clients requirements – as set out above
- Understanding the site – its historical development, Built and Cultural heritage; the Ecology and Natural heritage; Circulation and Access including parking; Site Context and Character; and the Site itself.
- Design Influences and Strategies then inform the overall concept and resulting Landscape Layout or Masterplan.
- A landscape layout plan is provided along with a selection of images to illustrate design intent.
- A materials strategy and planting strategy derives from the final plans.

The site sat on a sparsely occupied peninsula in the 19th century although even then it likely acted as an amenity to occupants of the town with a baths at the waters edge and bridge access from Wicklow town.

By the 20th century the peninsula had become an industrial centre for the town with a number of industrial sites extending from the rail down to the harbor stores at the tip.

The rail ran through the site - with the goods store at it's terminus sitting just south of the sites southern edge. It is likely the existing wall on site is associated with this rail line.

A military presence adjacent to the site is also of note - with the militia barracks (where KWETB are now based) and gun platforms just over the western edge.

The memorial garden on site maintains a connection between the towns history and the present remembering service members from the military, lifeguard and fire brigade.



GOODS STATION



CHEMICAL WORKS

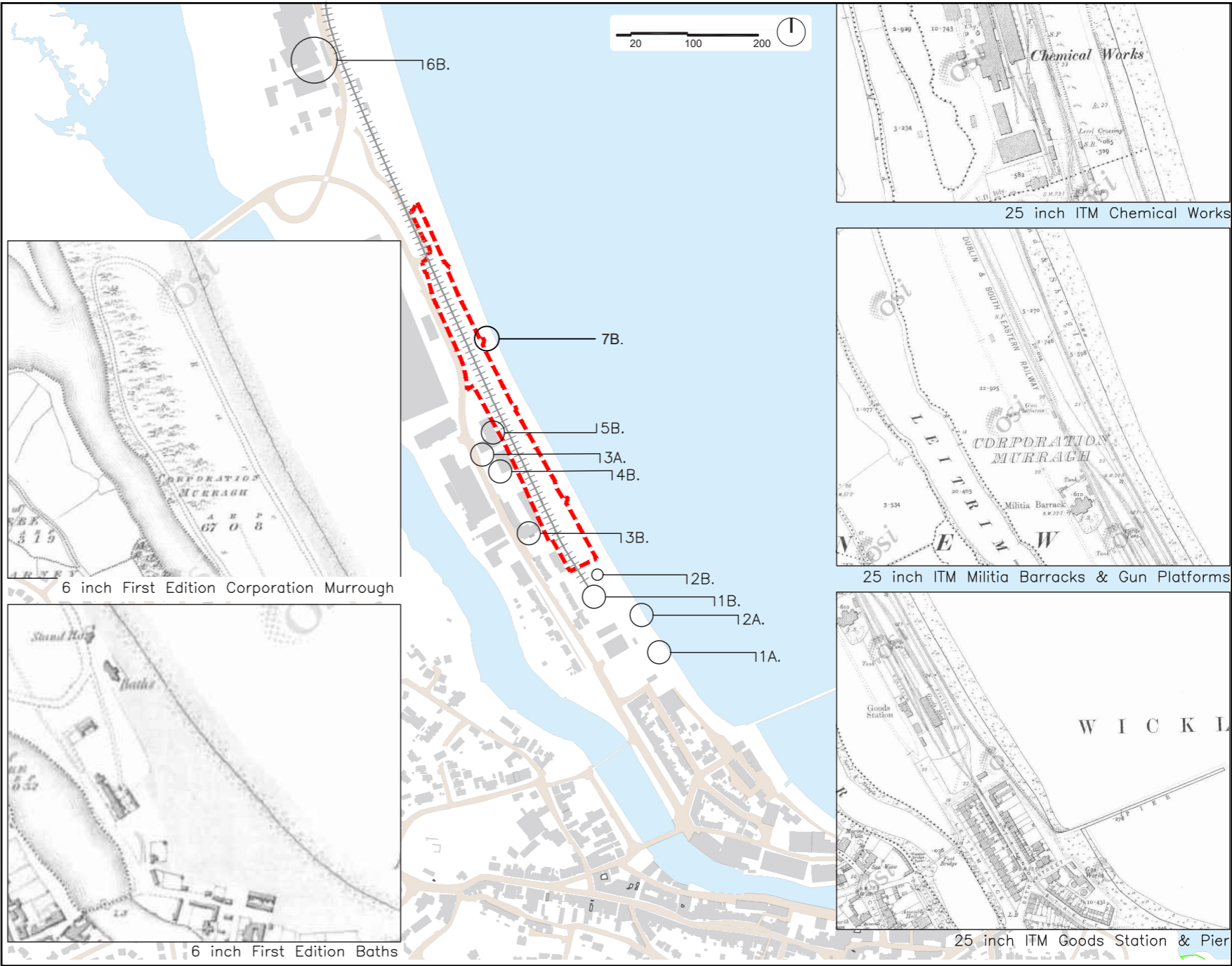


DIAGRAM ILLUSTRATING LOCATIONS OF HISTORICAL ELEMENTS

LEGEND

6 INCH FIRST EDITION (1829-41)

1A BATHS

2A STAND

3A CORPORATION MURROUGH

25 INCH ITM (1897-1913)

1B GOODS STATION

2B CATTLE PENS

3B MILITIA BARRACKS

4B CORPORATION MURROUGH

5B GUN PLATFORMS

6B CHEMICAL WORKS

7B OLD RAILWAY

ECOLOGICAL & NATURAL HERITAGE

The site is located on a peninsula between the River Vantry (referred to as Leitrim after the rail bridge) and the Irish Sea.

To the north lies the Murrough Special Protection Area (SPA) designated for a number of protected avian species.

To the west the river corridor forms the Murrough Wetlands Special Area of Conservation (SAC) designated for a number of habitats made up of vegetation communities.

The site itself is poor in biological value consisting primarily of hard surfaces, short grasses and rough ground with no trees or shelter leaving it exposed to strong winds.

There is potential for the proposed park enhancements to not only increase the overall biodiversity on the peninsula but also celebrate these nearby sites and raise awareness about their value.

The site is already one of the largest open spaces publicly available in the area - particularly within easy reach of the town centre. A key consideration is to maintain flexibility and avoid proscriptive programming and specialist community facilities that exclude other informal uses.

The site is part of a wider green corridor with the Leitrim river walk and village green - forming a nearly complete loop of open spaces.



SHINGLE BEACH FOR NESTING



SAC ALONG THE RIVER VENTRY

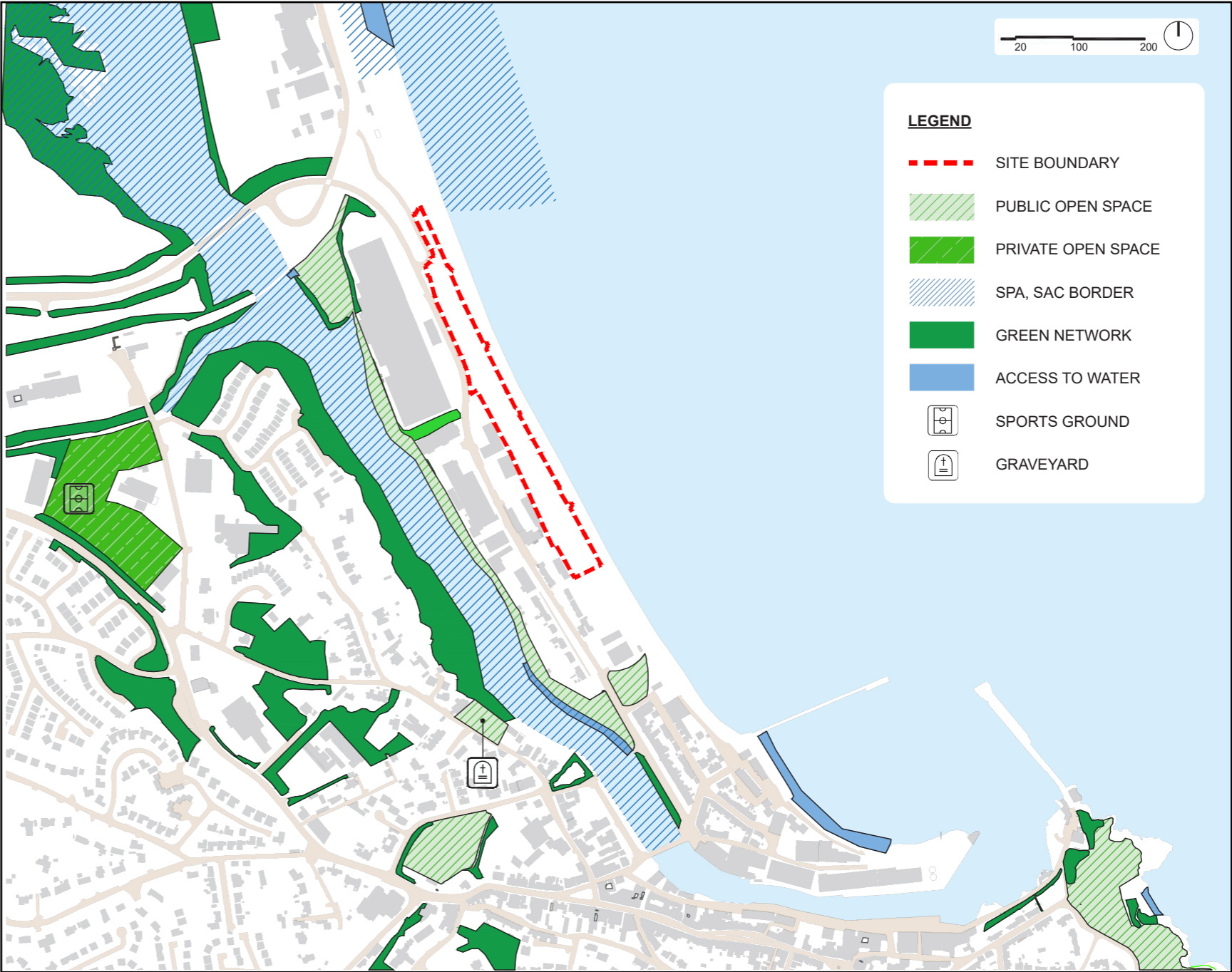


DIAGRAM ILLUSTRATING AREAS OF ECOLOGICAL INTEREST AND OPEN SPACE / GREEN NETWORK

The north end of the site is a short walk to the town's main train station over a narrow pedestrian bridge attached to the rail bridge.

To the south the site is well connected to the town centre with both a historical pedestrian bridge and footpath on the road bridge across the river.

Access to the site is most preferable from the harbour's edge or village green as the pedestrian environment past this point currently becomes poor.

Those linking from the river walk will generally have to walk all the way to the north end - although an informal route via two private carparks is possible.

Relatively new cycle lanes now connect the north end of the site (and all the way down to the recycling centre) for those on bikes from the west / Rathnew. Currently bus services don't run near the site - however they do connect to the train station and town centre mentioned above.



PEDESTRIAN RAIL BRIDGE



HARBOURS EDGE / 'VILLAGE GREEN'

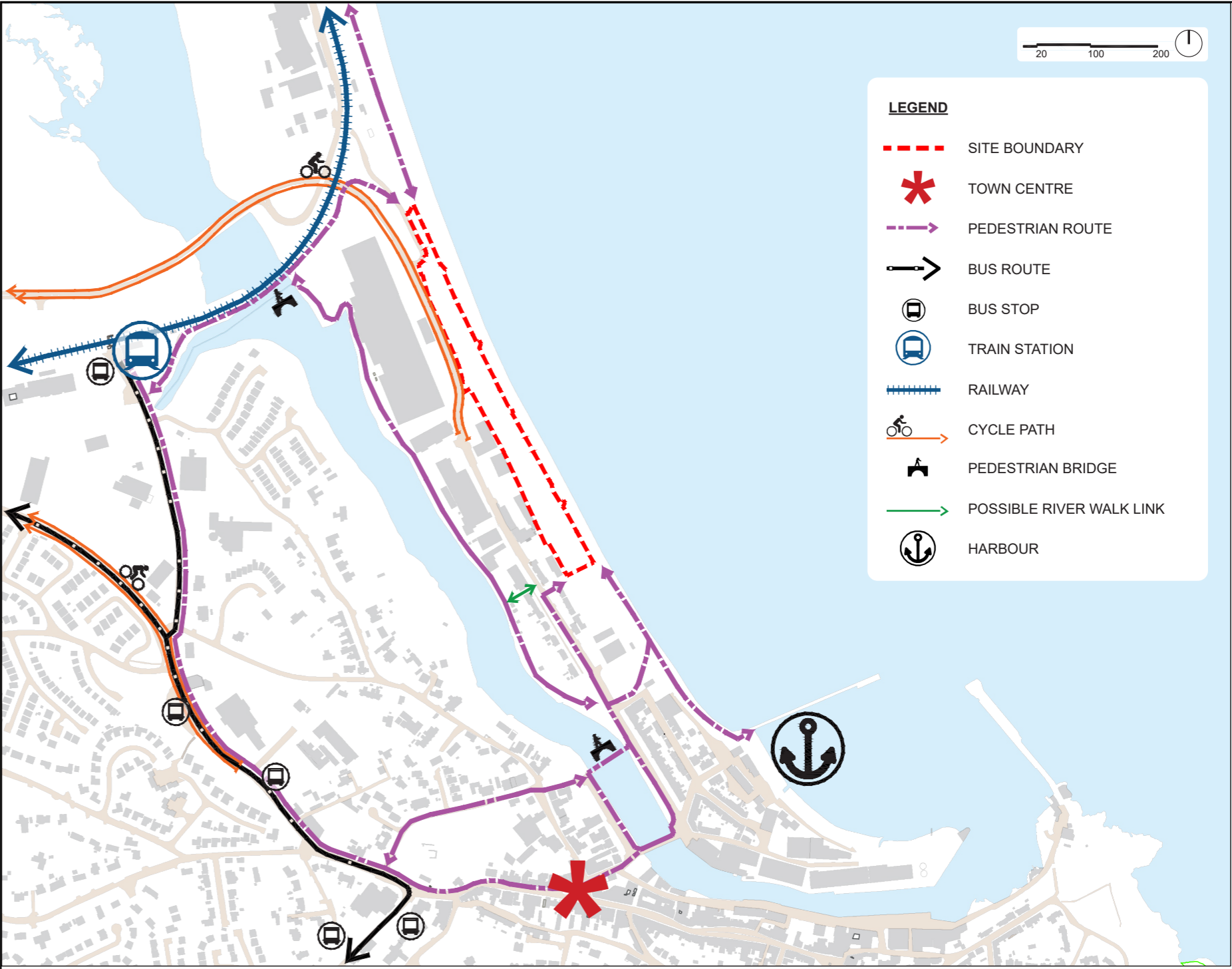


DIAGRAM ILLUSTRATING THE NETWORK OF PUBLIC TRANSPORT, PEDESTRIAN AND CYCLING CONNECTIONS

Those coming to the site by private car can come from either the North or South. Those coming from Rathnew or further afield via the M11 will generally arrive via the river and rail overbridges. Those arriving from town or the nearby south will take the bridge adjacent to the town centre.

Arrival to the site by car is made possible at both ends via existing parking lots. The northern one has a relatively small capacity which WCC are intending to expand.

The southern parking is popular and often also used by those visiting the town due to its capacity and relative proximity. For those parking in the larger parking areas in the town centre the site is still a relatively short walk away.



NORTHERN CARPARK



SOUTHERN CARPARK

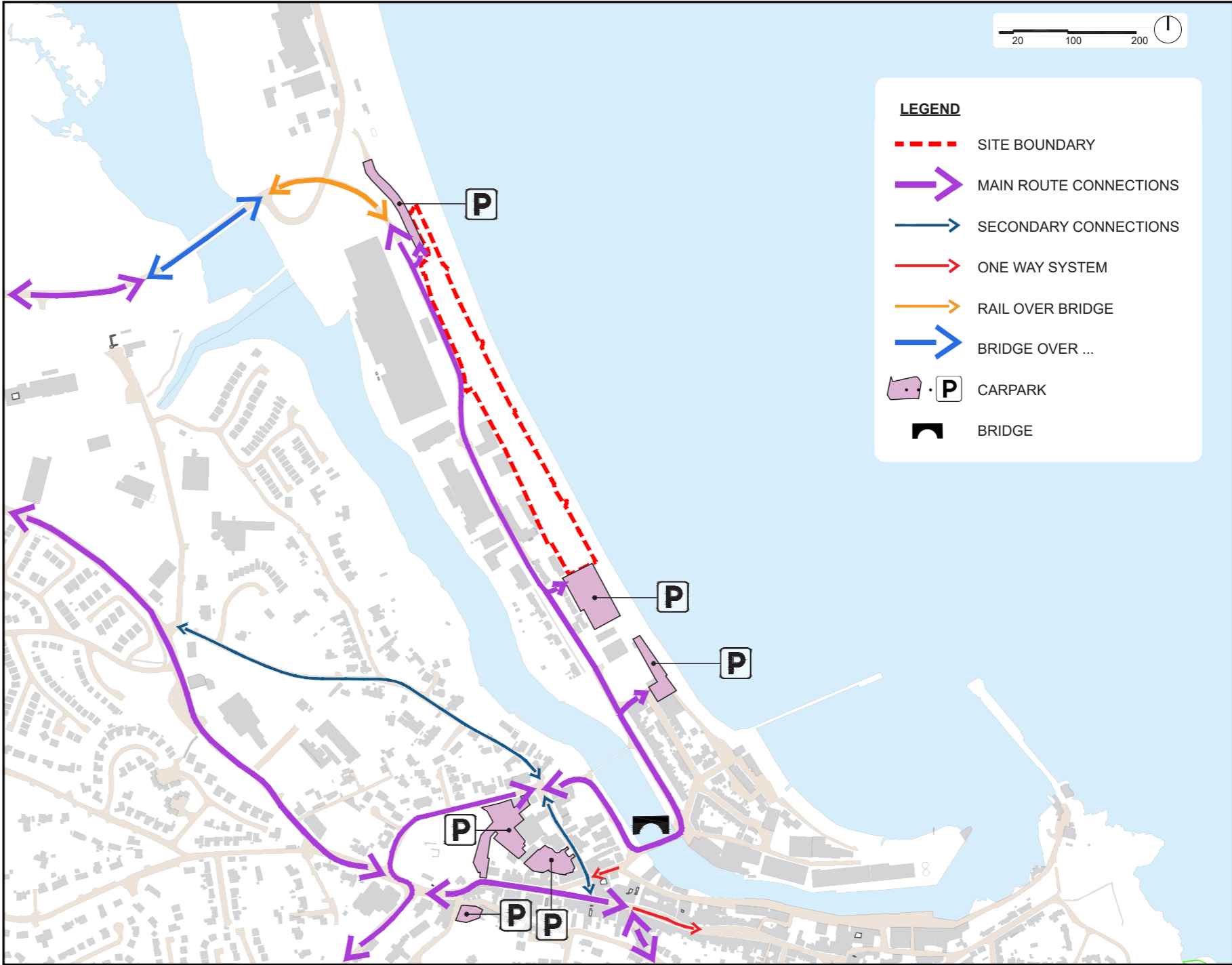


DIAGRAM ILLUSTRATING LOCAL STREET / ROAD NETWORK AND LOCATIONS FOR PRIVATE VEHICLE PARKING

The site itself is part of the southern section and most urbanised part of the Murrough coastal salt plain / mash that runs for several kilometres north of Wicklow town separating the Irish sea from the Leitrim river and Broad Lough.

As the town of Wicklow expanded the harbour grew across the Leitrim River and the area become integrated into the town itself – the expanded harbour serviced by a rail spur from the main Dublin Wexford line. Much of the remaining central part of the long spit of land has become occupied by industry, some commercial and residential development leading to strips of land use, from the riverside walk along the Leitrim River, through the central developed area to the waterfront corridor.

As the amenity value is enhanced, this may appear conflicting however the central developed strip is recognised as the Murrough Opportunity Area with proposals for redevelopment as a Mixed Use Urban Area – a new urban waterfront quarter growing the town centre of Wicklow to the seafront. The project area encompasses the remaining green space to the east of the new urban quarter. The area enjoys large panoramas to sea, areas of semi-wilderness and a bracing promenade. The challenge of the masterplan is to bring the various functional uses that have evolved over the years, and the required new facilities, together in a holistic and placemaking approach that integrates with and catalyzes the development of the new urban quarter. The site itself sits mostly in a waterfront promenade open space. This has a relatively formal characteristic with paved surfaces alongside open spaces and structured community facilities. This continues to the south of the site linking the whole way to the harbor.

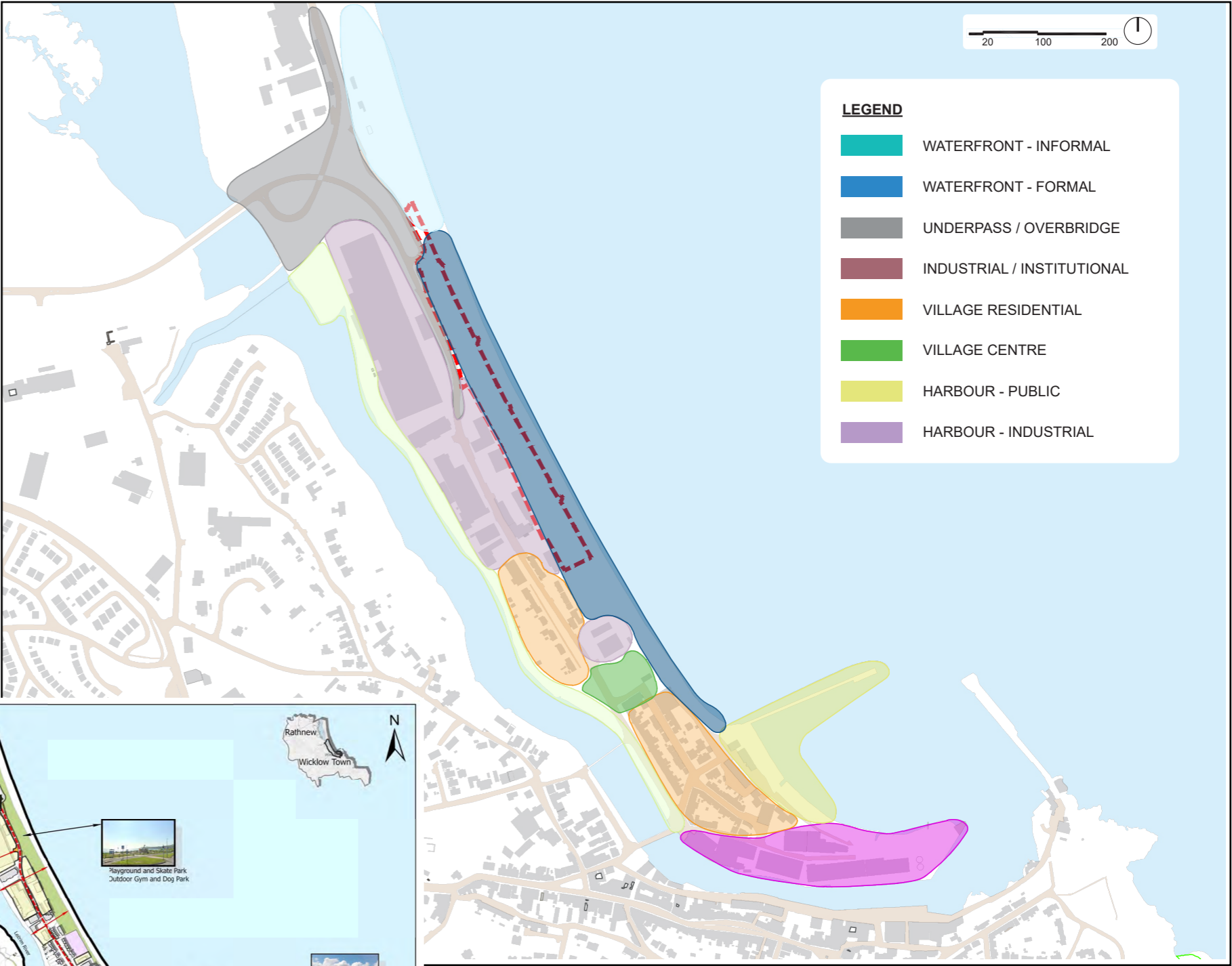
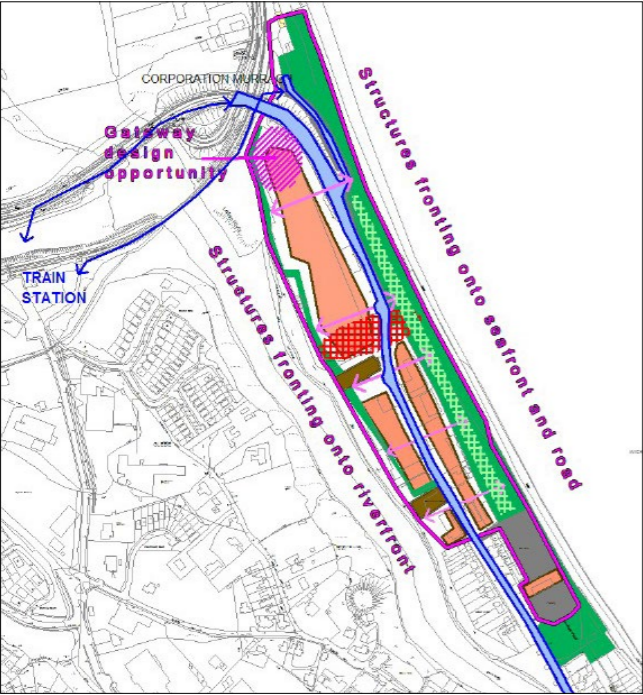


Diagram identifying the different distinct character areas near and within the site boundary.



Wicklow Town – Rathnew Development Plan 2013-2019



Draft Wicklow Town - Rathnew Local Area Plan 2025

SITE CHARACTER ASSESSMENT

The diagram on the previous page divides the context into a series of character areas (illustrated with photos here):

Informal Waterfront: The northern end of the site shifts to a more informal unpaved promenade leading into a popular walking route and beach access.

Formal Waterfront: Consisting of hardstand path and revetments.

Underpass Area: The adjacent space to the north west of the site is characterised by the large transport infrastructure of the rail bridge, underpass and railway itself. This infrastructure obstructs views to the mountains from here, are utilitarian in nature and generally reduce the quality of the space.

Industrial / Institutional: To the west of the site is a series of large industrial and institutional buildings. While some of these (such as the KWETB) have a positive character - the majority do not (particularly on those facades facing the site). However these are mostly part of the urban renewal / opportunity area described above and will benefit from the park development.

The Village: To the south west of the site is an area of smaller scale residential dwellings with a village centre at their heart. These have a pleasant character - particularly the green space in the center which - while not directly adjacent to the site - ties into it via the promenade.

The Harbour: The harbor to the south can be separated into two. A publicly accessible section including a popular wharf and enclosed beach where swimming is possible sits closest to the site. At the Southern tip of the peninsula sits a more industrial area of harbor buildings. Some of the spaces here aren't publicly accessible.

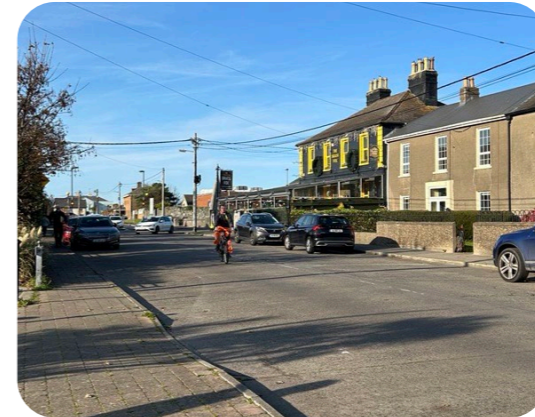
WATERFRONT - INFORMAL



UNDERPASS / OVERBRIDGE



VILLAGE RESIDENTIAL



HARBOUR - PUBLIC



WATERFRONT - FORMAL



INDUSTRIAL / INSTITUTIONAL



VILLAGE CENTRE



HARBOUR - INDUSTRIAL



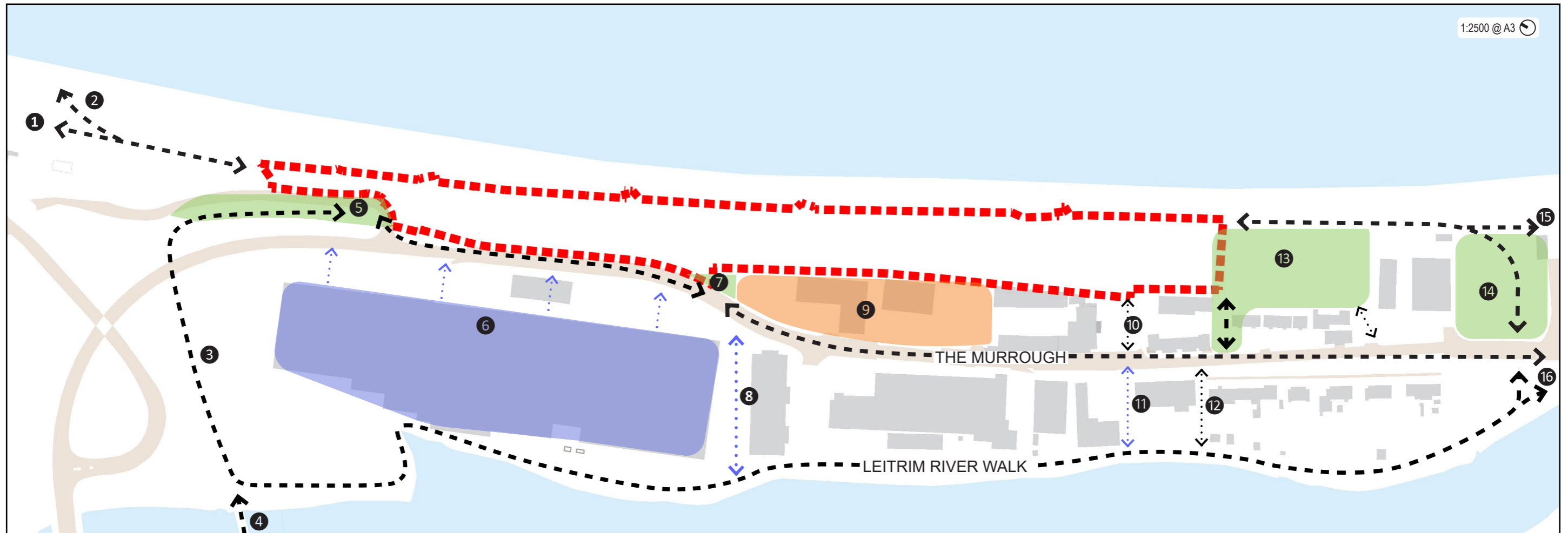


Diagram of areas of opportunity adjacent to the site alongside various external constraints

- | | | |
|--|---|--|
| <p>① Northern link to future Greenway.</p> <p>② Stair access to beach.</p> <p>③ Northern cycle/pedestrian link from Leitrim river walk.</p> <p>④ Pedestrian/cycle link from Wicklow train station.</p> <p>⑤ Northern carpark is the primary entrance to the northern end of site accommodating cycle/pedestrian and vehicle connections from The Murrough, and cycle/pedestrian connection from the Leitrim river walk.</p> <p>⑥ Recently purchased land parcel rezoned for mixed use could create links to central and northern site access points.</p> | <p>⑦ Central entrance point to site, accommodating cycle/pedestrian connection from The Murrough.</p> <p>⑧ Potential cycle/pedestrian link from Leitrim river walk and central entrance point to site.</p> <p>⑨ Existing recycling centre visible along central site boundary.</p> <p>⑩ Existing informal access point to southern site through KWETB carpark.</p> <p>⑪ Potential cycle/pedestrian link from Leitrim river walk to southern site, through KWETB carpark.</p> <p>⑫ Existing informal access route to The Murrough from Leitrim river walk.</p> | <p>⑬ Murrough carpark is adjacent to the primary entrance to the southern end of site. In addition to the vehicular access on the northwest corner, there is also pedestrian access on the southwest corner.</p> <p>⑭ Upper Strand Street park. Park is significant to the community, hosting the Wicklow Christmas Market. Primary link between the southern portion of the Leitrim river walk and the promenade.</p> <p>⑮ Southern link to North Pier and Wicklow Harbor</p> <p>⑯ Link to cycle/pedestrian bridge and road bridge leading to Wicklow township.</p> |
|--|---|--|



OPEN SPACE / GRASS



SKATEPARK



STONE WALL

- LEGEND**
- ① Open Space / Grass
 - ② Informal path & link to greenway
 - ③ Hardstand promenade
 - ④ Vegetation
 - ⑤ Playground
 - ⑥ Skate park
 - ⑦ Informal Pumptrack
 - ⑧ Recycling centre
 - ⑨ Dog park
 - ⑩ Stone Wall
 - ⑪ Murrough Memorial Garden



PLAN SHOWING DIFFERENT ELEMENTS AND FINISHES ACROSS THE EXISTING SITE (TAKEN FROM DRAWING 24272-2-D01)



INFORMAL PATH & LINK TO GREENWAY



PLAYGROUND



DOG PARK



MURROUGH MEMORIAL GARDEN

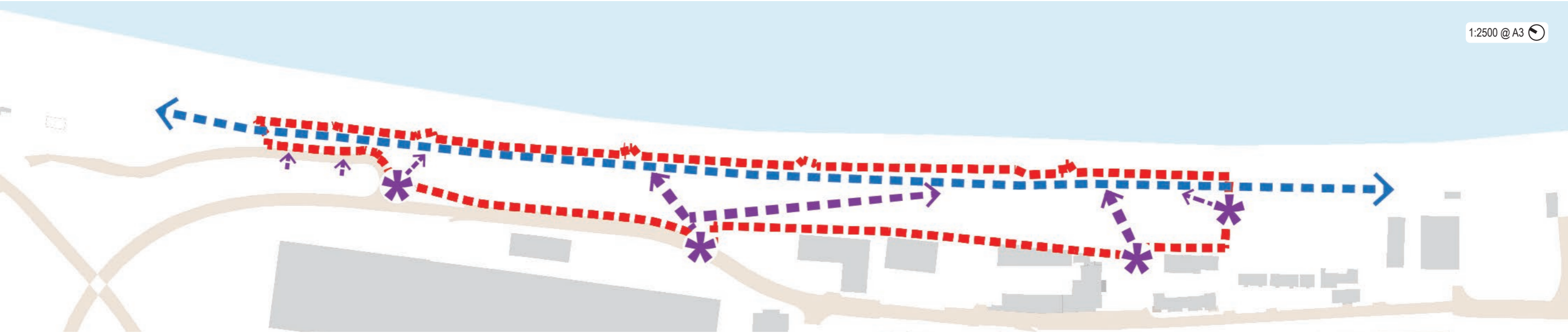


Diagram illustrating proposed access and circulation

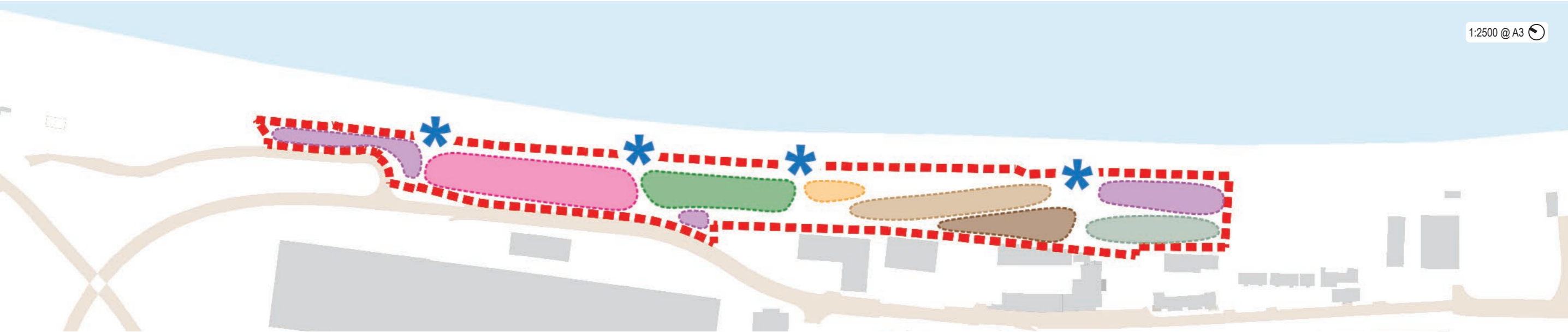


Diagram illustrating proposed spatial arrangement.

- * SITE ACCESS POINTS
- PRIMARY EXISTING MOVEMENT
- PRIMARY PROPOSED MOVEMENT
- SECONDARY PROPOSED MOVEMENT
- SITE BOUNDARY

- * INTERSECTIONS/ POINTS OF INTEREST
- SITE ENTRANCE SPACES
- ACTIVE PLAY SPACES (PLAY, SKATE, PUMP TRACK)
- OPEN GREEN SPACE
- MEMORIAL SPACE

- ACTIVE EXERCISE SPACE
- ENCLOSED DOG PARK
- AIRES SPACE



Schematic plan of coastal typologies around Wicklow town



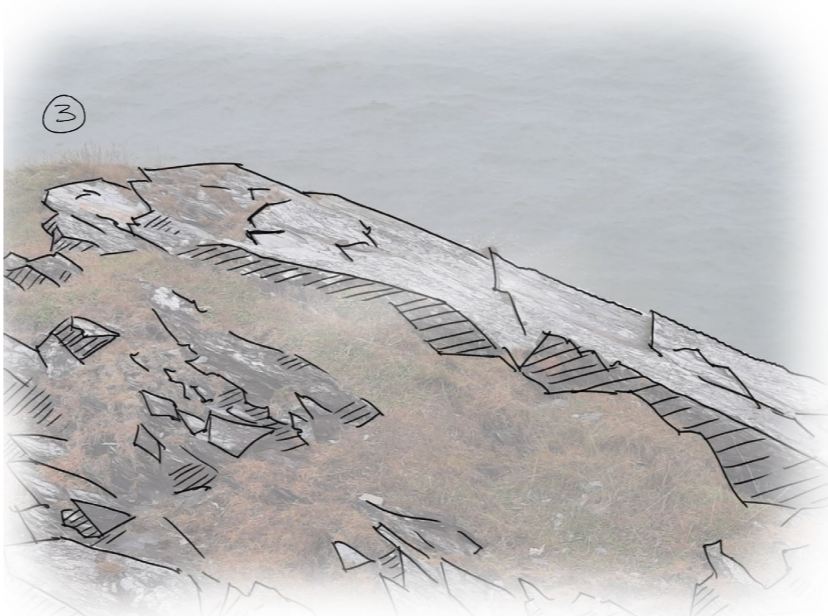
Rail Line Patterns

The site's history as a rail corridor for supplying the goods station to the South is referenced in the use of multiple linear axis through the site.



Embracing Harbour Walls

The maritime heritage of the harbor, and Wicklow's connection to the sea is expressed in the site design. A series of intersecting alignments influenced by the inferred intersection of the two harbour walls and the frequent intersection of their shipping routes and the harbour as a safe sheltered place.



Rugged Coast

The form of the site layout and structures is also informed by the geology and topography of the adjacent Wicklow Head. The rugged lines of the coastal rocks influences the fractal forms of the layout.

PROPOSED LAYOUT

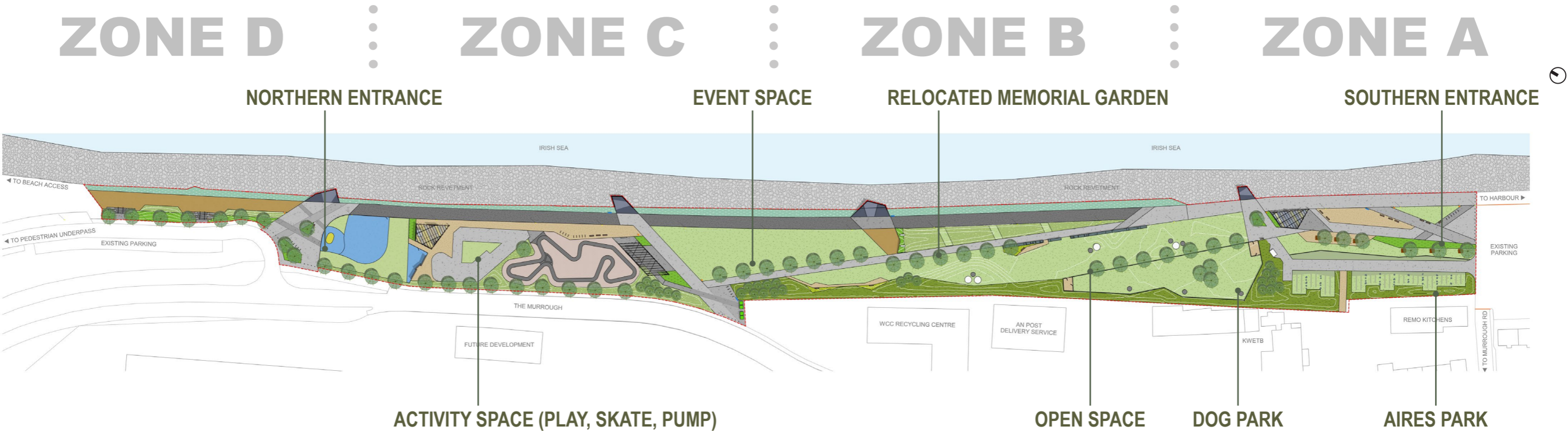
This proposal, while shown as a whole below and on the following page, has been divided into 4 zones across the next part of the statement to properly illustrate the design intent.

3 pages are devoted to each zone:

- a layout plan
- an annotated aerial view & a section
- a ground level view

The zones are as follows and run from north to south as illustrated below:

- Zone A - Southern Entrance & Aires Overnight Park (pages 16-18)
- Zone B - Active Space & Memorial Garden (pages 19-21)
- Zone C - Central Event Space (pages 22-24)
- Zone D - Northern Entrance & Terraces (pages 25-27)



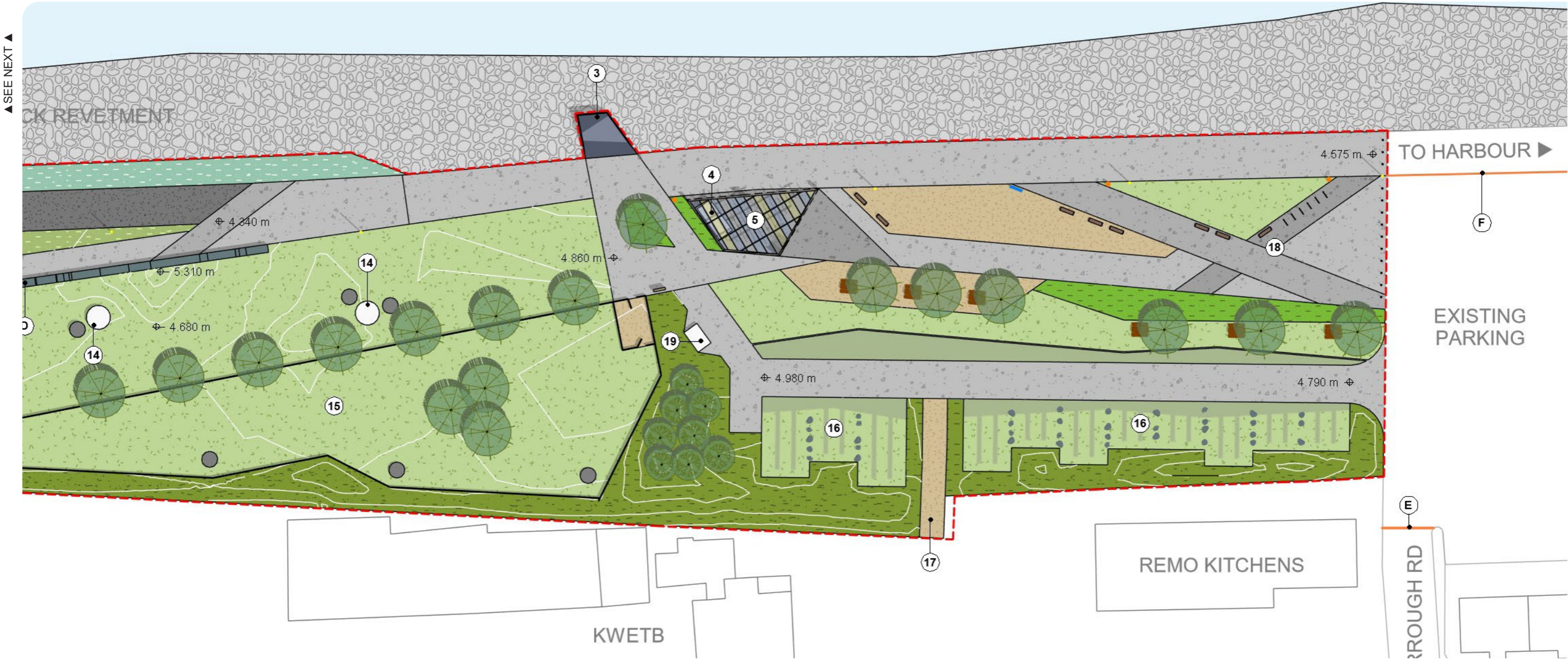
Note: A more detailed legend including materials and finishes is available in the full A1 layout (24272-2-111)

SITE OVERVIEW

Aerial view looking north from the harbour arms



ZONE A - PROPOSED LAYOUT
SOUTHERN ENTRANCE & AIRES OVERNIGHT PARK



NOTES

PROPOSED

- | | | |
|--|---|------------------------------|
| 1. STAIRS, TERRACES AND SEATING | 8. STAGE / PERFORMANCE SPACE (SEE SHEET 921 FOR DETAIL) | 14. EXERCISE NODES |
| 2. NORTHERN ENTRANCE PLAZA | 9. GRASSED OPEN SPACE | 15. FENCED DOG PARK |
| 3. FEATURE VIEWING PLATFORM (SEE SHEET 901 FOR DETAIL) | 10. CENTRAL ENTRANCE PLAZA | 16. VEHICLE CAMPING SPACES |
| 4. AUTOMATED PUBLIC TOILETS (SEE SHEET 911 FOR DETAIL) | 11. RECYCLING CENTRE EDGE WITH SIGNAGE | 17. PEDESTRIAN LINK TO KWETB |
| 5. GLAZED SHELTER | 12. SENSORY GARDEN AREAS | 18. SOUTHERN ENTRANCE PLAZA |
| 6. TEEN ZONE / EXTENDED PLAYGROUND AND CLIMBING WALL | 13. MEMORIAL GARDEN RELOCATED TO CENTRAL LOCATION | 19. CAMPER WASTE FACILITIES |
| 7. PUMP TRACK | | |

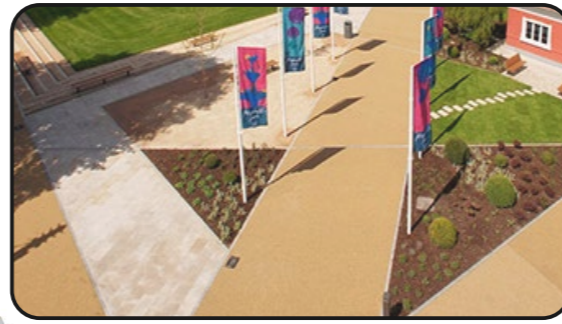


ZONE A - AERIAL VIEW

SOUTHERN ENTRANCE & AIRES OVERNIGHT PARK



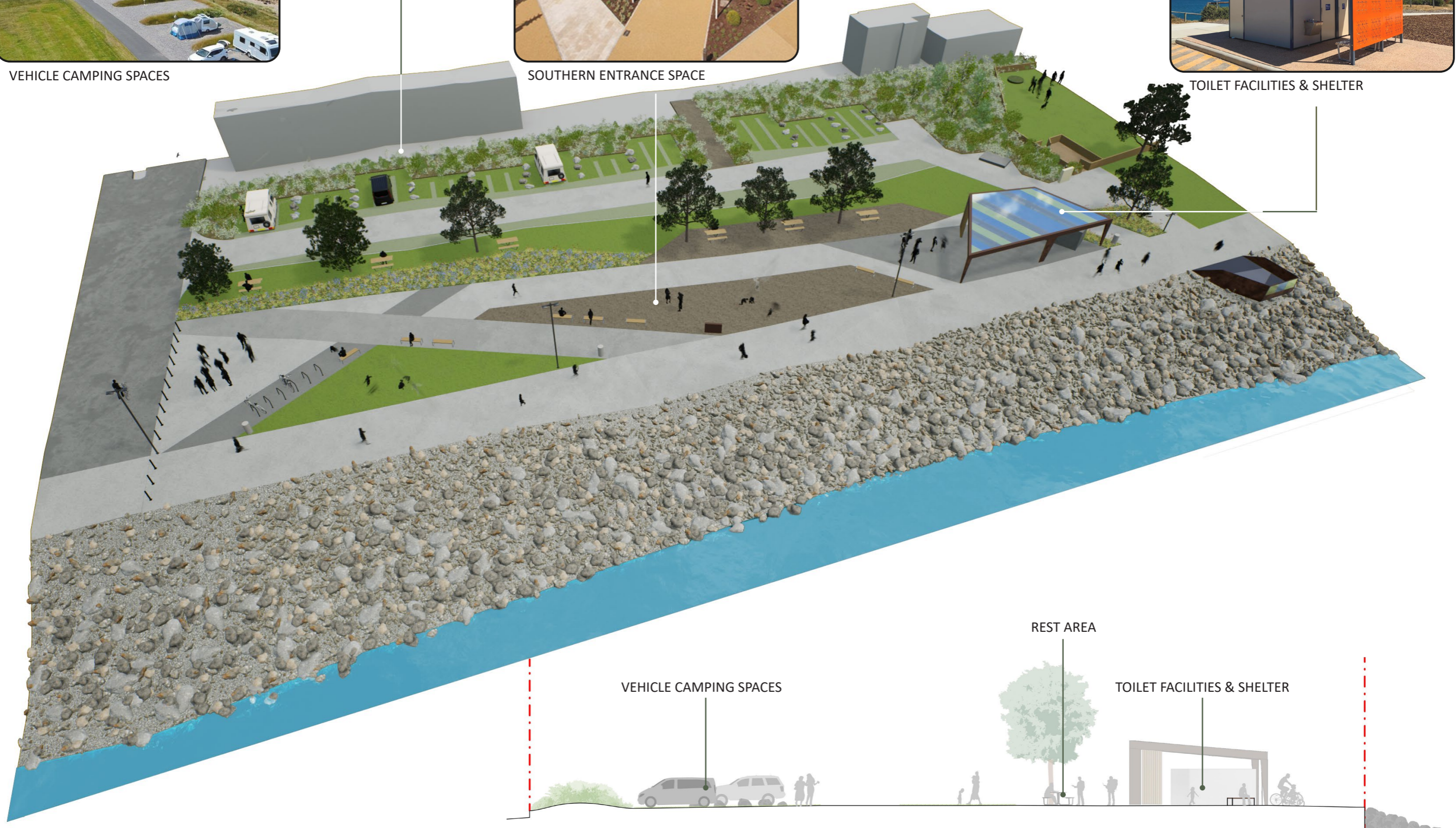
VEHICLE CAMPING SPACES



SOUTHERN ENTRANCE SPACE



TOILET FACILITIES & SHELTER



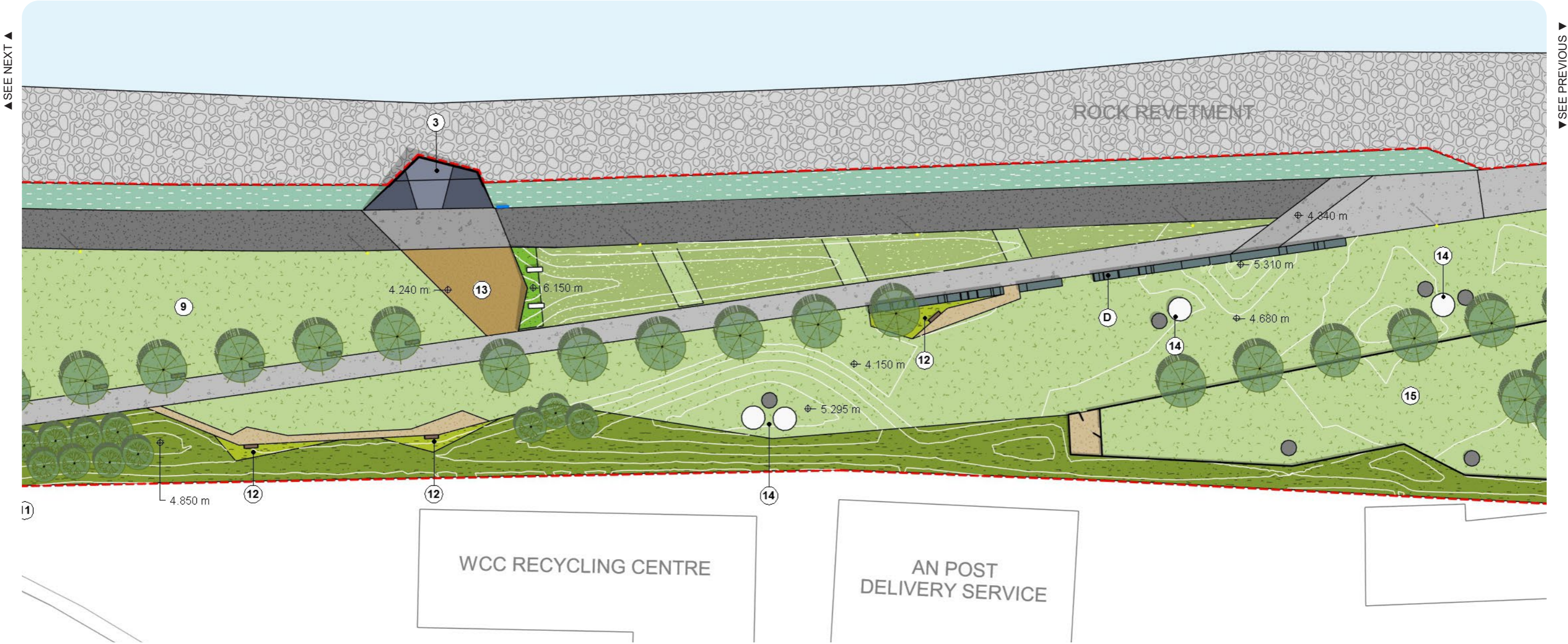
VEHICLE CAMPING SPACES

REST AREA

TOILET FACILITIES & SHELTER

ZONE A - GROUND LEVEL VIEW
SOUTHERN ENTRANCE LOOKING NORTH

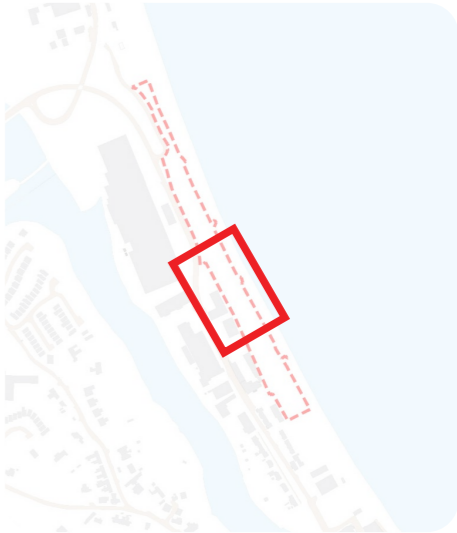




NOTES

PROPOSED

- | | | |
|--|---|------------------------------|
| 1. STAIRS, TERRACES AND SEATING | 8. STAGE / PERFORMANCE SPACE (SEE SHEET 921 FOR DETAIL) | 14. EXERCISE NODES |
| 2. NORTHERN ENTRANCE PLAZA | 9. GRASSED OPEN SPACE | 15. FENCED DOG PARK |
| 3. FEATURE VIEWING PLATFORM (SEE SHEET 901 FOR DETAIL) | 10. CENTRAL ENTRANCE PLAZA | 16. VEHICLE CAMPING SPACES |
| 4. AUTOMATED PUBLIC TOILETS (SEE SHEET 911 FOR DETAIL) | 11. RECYCLING CENTRE EDGE WITH SIGNAGE | 17. PEDESTRIAN LINK TO KWETB |
| 5. GLAZED SHELTER | 12. SENSORY GARDEN AREAS | 18. SOUTHERN ENTRANCE PLAZA |
| 6. TEEN ZONE / EXTENDED PLAYGROUND AND CLIMBING WALL | 13. MEMORIAL GARDEN RELOCATED TO CENTRAL LOCATION | 19. CAMPER WASTE FACILITIES |
| 7. PUMP TRACK | | |



ZONE B - AERIAL VIEW
DOG PARK & ACTIVE SPACE



EXERCISE NODES



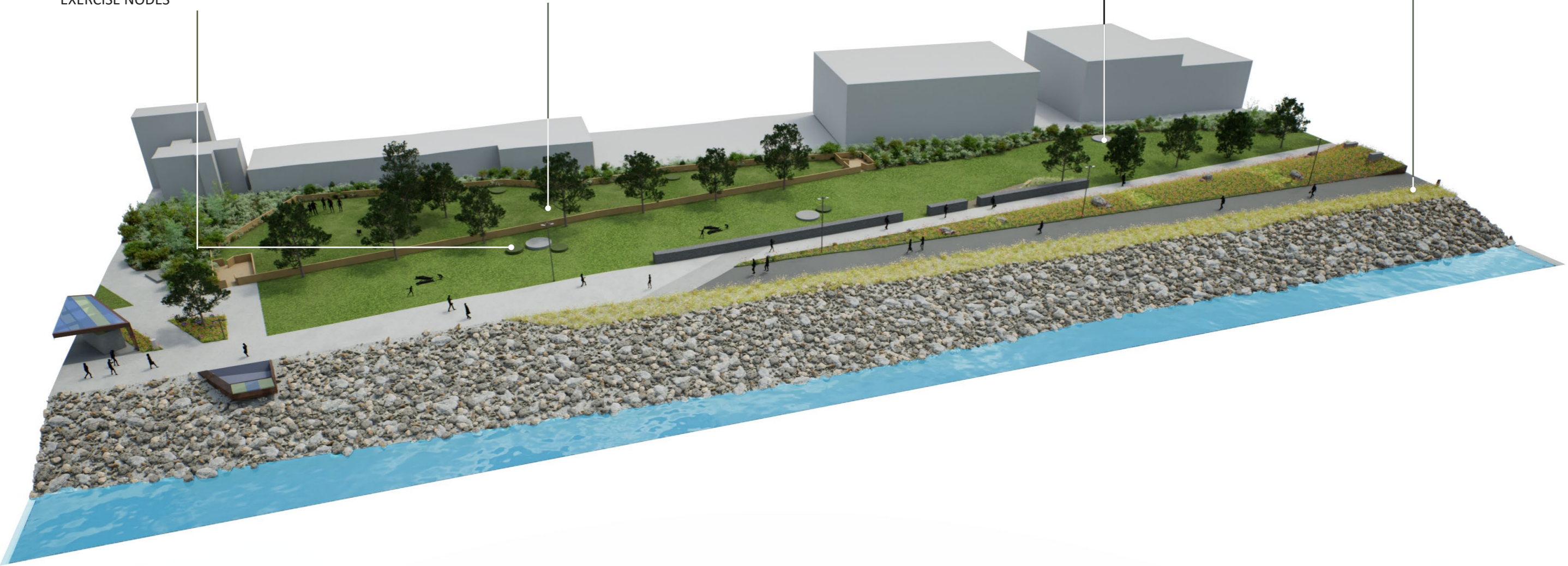
FENCED DOG PARK



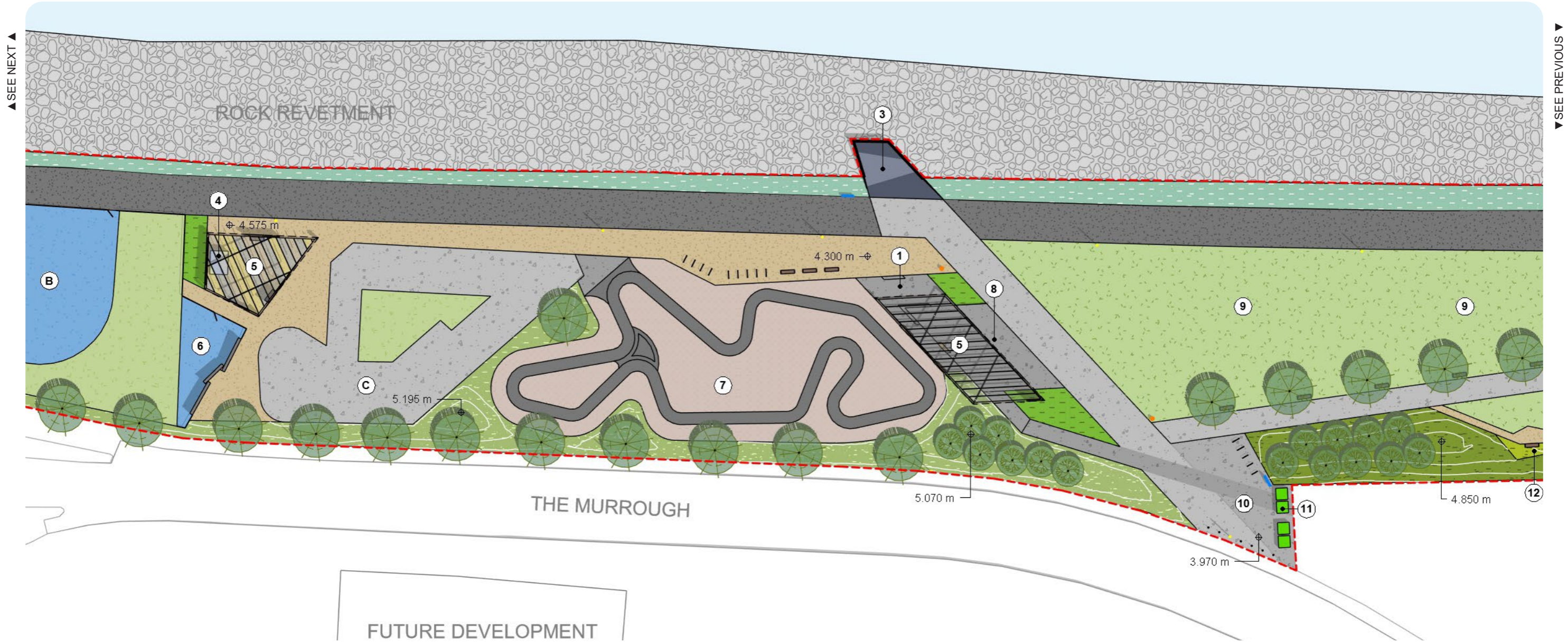
EXERCISE EQUIPMENT



COASTAL EDGE PLANTING



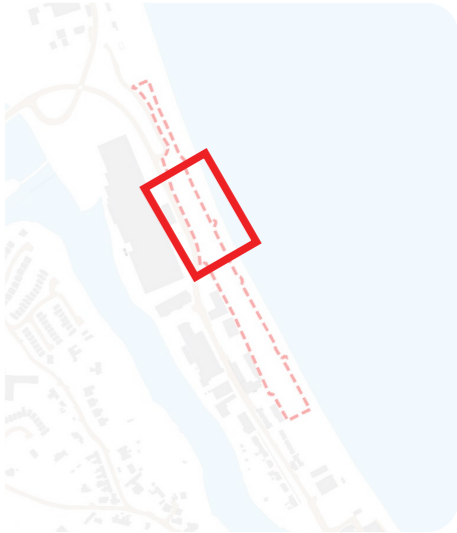




NOTES

PROPOSED

- | | | |
|--|---|------------------------------|
| 1. STAIRS, TERRACES AND SEATING | 8. STAGE / PERFORMANCE SPACE (SEE SHEET 921 FOR DETAIL) | 14. EXERCISE NODES |
| 2. NORTHERN ENTRANCE PLAZA | 9. GRASSED OPEN SPACE | 15. FENCED DOG PARK |
| 3. FEATURE VIEWING PLATFORM (SEE SHEET 901 FOR DETAIL) | 10. CENTRAL ENTRANCE PLAZA | 16. VEHICLE CAMPING SPACES |
| 4. AUTOMATED PUBLIC TOILETS (SEE SHEET 911 FOR DETAIL) | 11. RECYCLING CENTRE EDGE WITH SIGNAGE | 17. PEDESTRIAN LINK TO KWETB |
| 5. GLAZED SHELTER | 12. SENSORY GARDEN AREAS | 18. SOUTHERN ENTRANCE PLAZA |
| 6. TEEN ZONE / EXTENDED PLAYGROUND AND CLIMBING WALL | 13. MEMORIAL GARDEN RELOCATED TO CENTRAL LOCATION | 19. CAMPER WASTE FACILITIES |
| 7. PUMP TRACK | | |



ZONE C - AERIAL VIEW

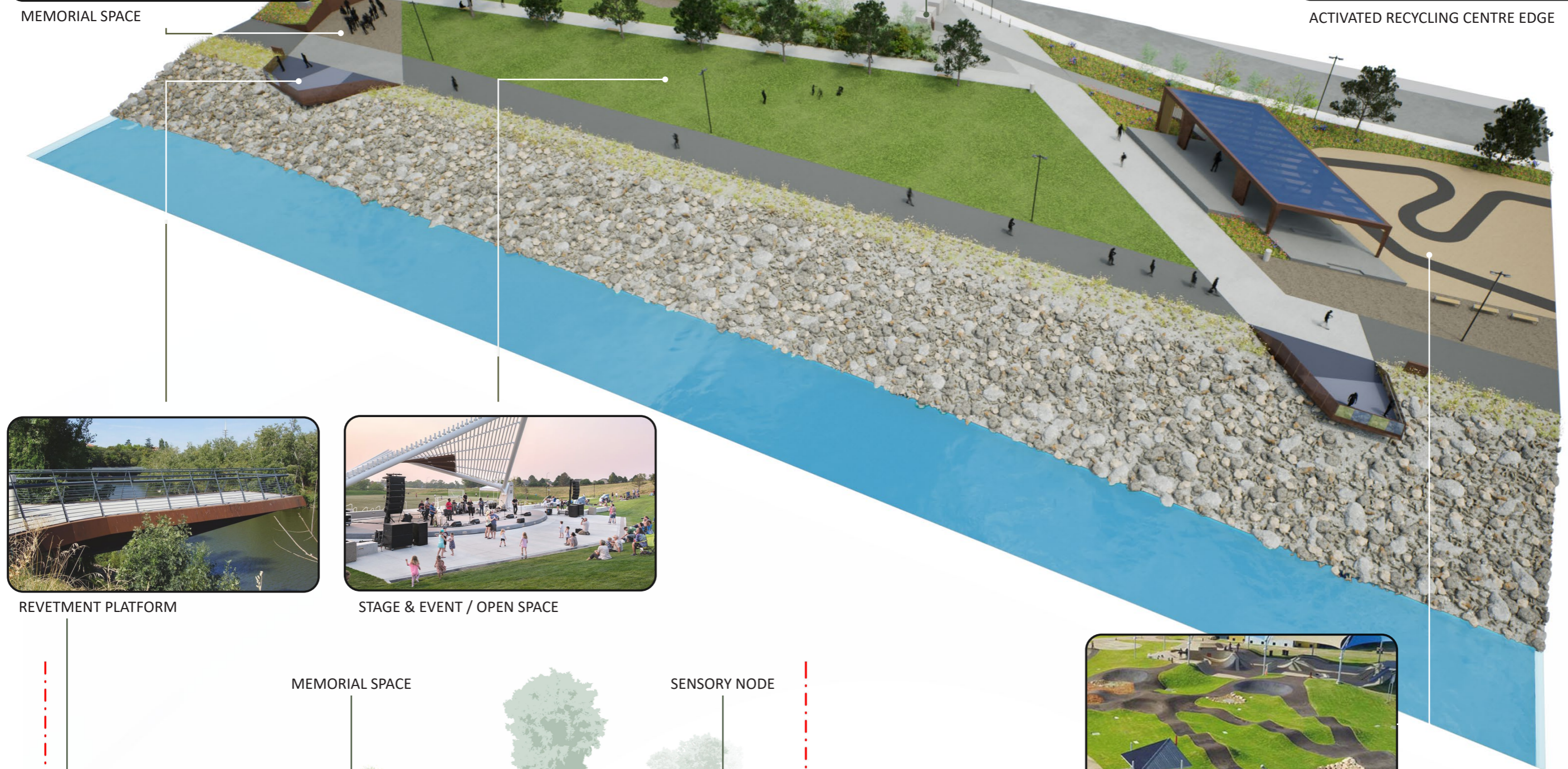
CENTRAL EVENT SPACE



MEMORIAL SPACE



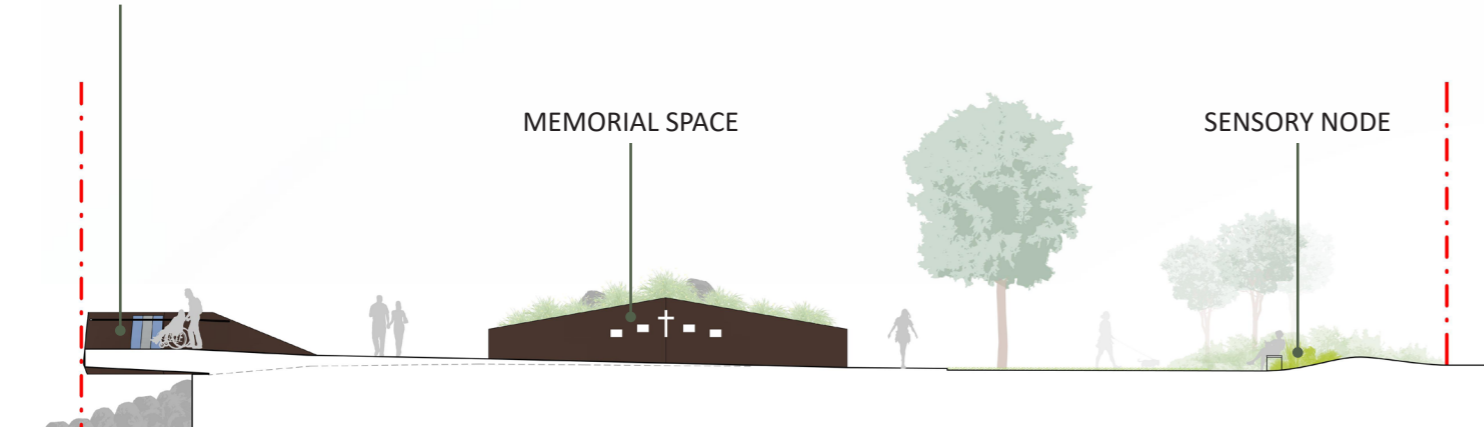
ACTIVATED RECYCLING CENTRE EDGE



REVETMENT PLATFORM



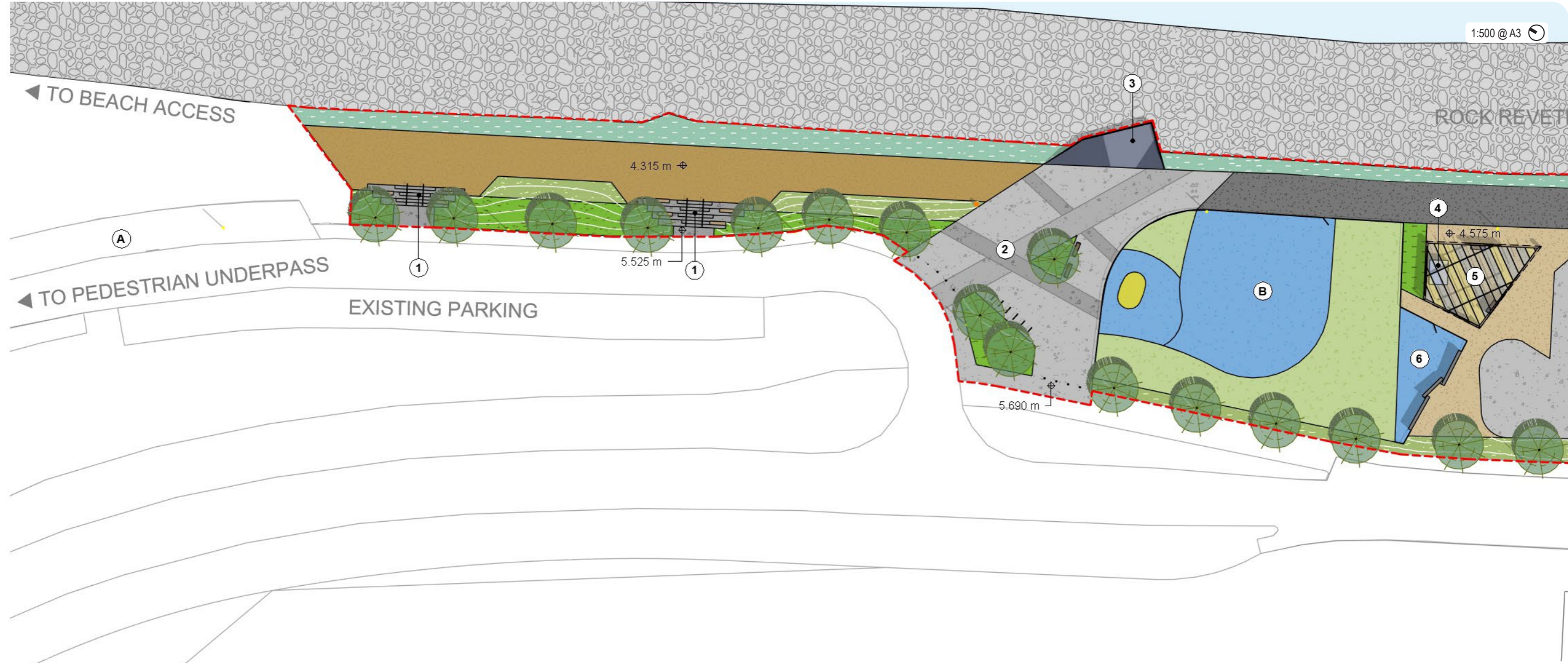
STAGE & EVENT / OPEN SPACE



PUMP TRACK

ZONE C - GROUND LEVEL VIEW
CENTRAL EVENT SPACE LOOKING NORTH

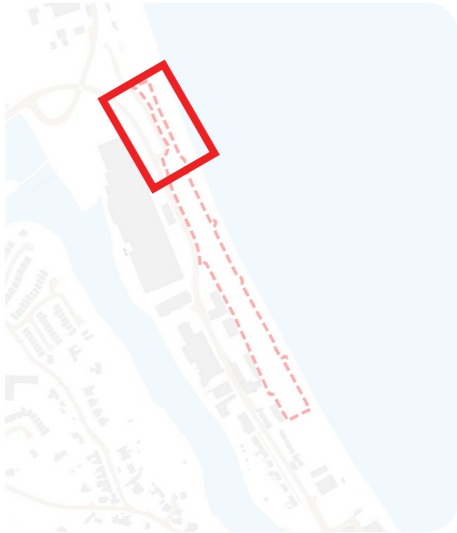




NOTES

PROPOSED

- | | | |
|--|---|------------------------------|
| 1. STAIRS, TERRACES AND SEATING | 8. STAGE / PERFORMANCE SPACE (SEE SHEET 921 FOR DETAIL) | 14. EXERCISE NODES |
| 2. NORTHERN ENTRANCE PLAZA | 9. GRASSED OPEN SPACE | 15. FENCED DOG PARK |
| 3. FEATURE VIEWING PLATFORM (SEE SHEET 901 FOR DETAIL) | 10. CENTRAL ENTRANCE PLAZA | 16. VEHICLE CAMPING SPACES |
| 4. AUTOMATED PUBLIC TOILETS (SEE SHEET 911 FOR DETAIL) | 11. RECYCLING CENTRE EDGE WITH SIGNAGE | 17. PEDESTRIAN LINK TO KWETB |
| 5. GLAZED SHELTER | 12. SENSORY GARDEN AREAS | 18. SOUTHERN ENTRANCE PLAZA |
| 6. TEEN ZONE / EXTENDED PLAYGROUND AND CLIMBING WALL | 13. MEMORIAL GARDEN RELOCATED TO CENTRAL LOCATION | 19. CAMPER WASTE FACILITIES |
| 7. PUMP TRACK | | |



ZONE D - AERIAL VIEW
NORTHERN ENTRANCE & TERRACES



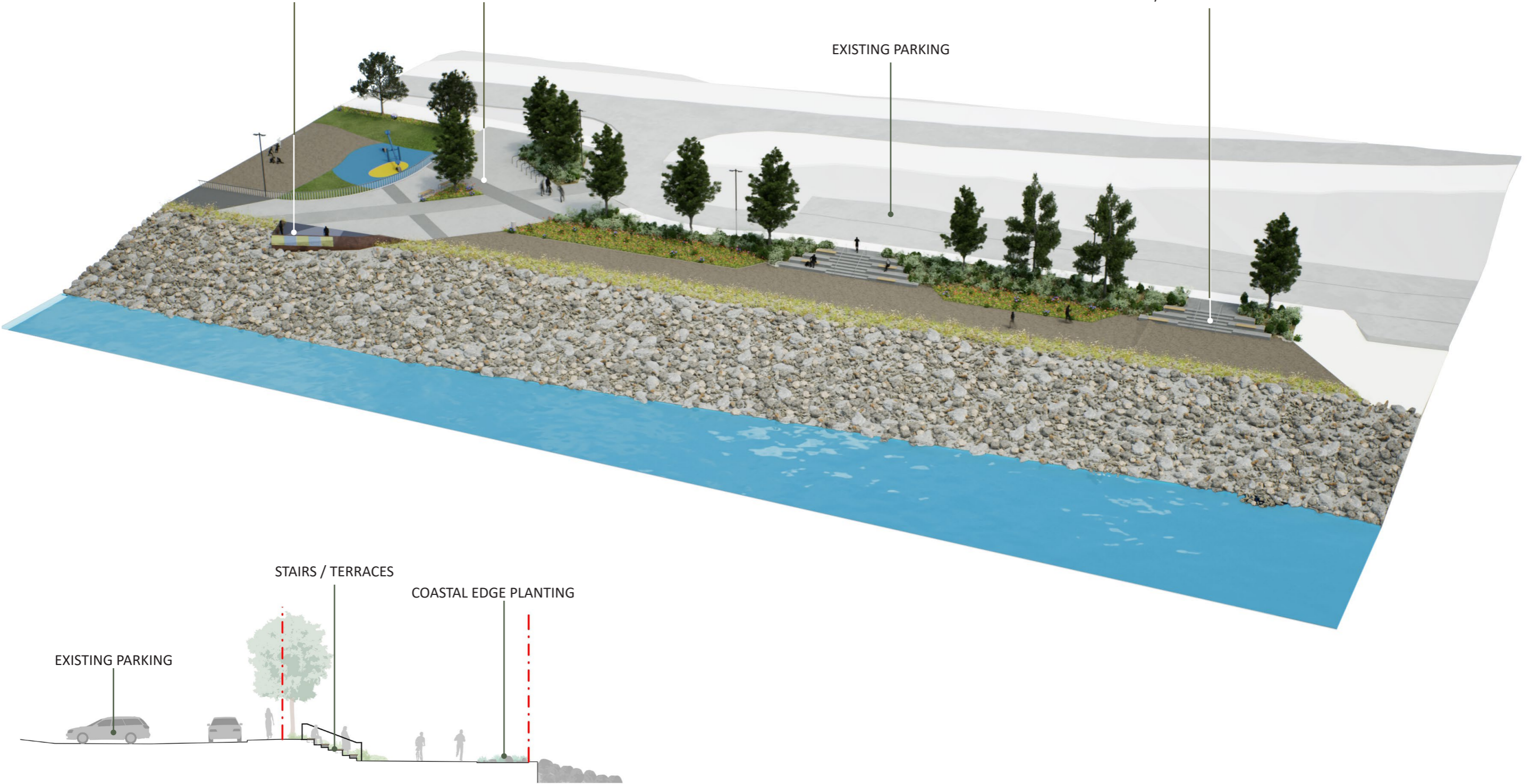
VIEWING PLATFORM



NORTHERN ENTRANCE SPACE



STAIRS / TERRACES





Aesthetic Goals: Complimenting the existing materials on site and keeping visual harmony with the site context

Functional Goals: Durable, weather resistant and matching the existing context (in some aspects) as well as being accessible.

Amenity Goals: Inviting and inclusive, bringing interest to the site and leading users through a coherent experience, that can also be used as an event space.

MATERIALS:



BOULDERS
Act as barriers/ natural play elements



TIMBER HARDWOOD SLATS
Timber slats fixed to concrete



STEEL HANDRAIL
Durable and resilient to the coastal location, for handrails and fixings



PRECAST CONCRETE
Durable and resilient, with a clean smooth appearance



CORTEN STEEL
Unique surface which is linked throughout site structures

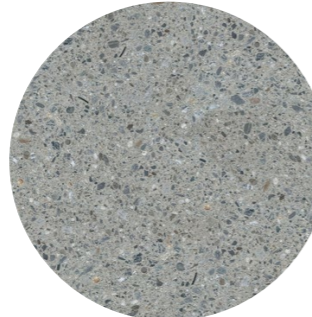
SURFACES:



BRUSHED CONCRETE FINISH
Flat colour and slip resistant



DARK CONCRETE FINISH
Darker colour for contrast



GROUND AGGREGATE CONCRETE
Unique texture through its finish



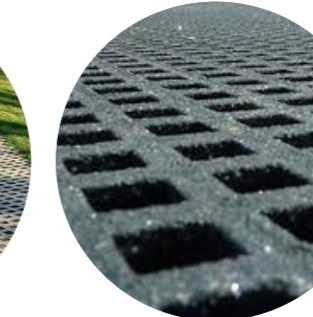
RESIN BONDED GRAVEL
Yellow colour, slip resistance



HOGGIN
Slip resistance



REINFORCED GRASS WHEEL STRIP
heavy-duty paved surface for high-traction requirements.



GRP DECKING
Fiberglass reinforced plastic decking.

FIXTURES:



TIMBER BENCH WITH BACK
mmcit  RADIUM park bench



DOG PLAY EQUIPMENT
Providing Dynamic play throughout



CALESTENIC EQUIPMENT
KOMPAN Robinia outdoor timber fitness equipment



PICNIC BENCHES
mmcit  BLOCQ picnic table



BIKE STANDS
mmcit  EDGETYRE Bicycle stands



PUBLIC BINS
mmcit  RADIUM litter bins



CORTEN STEEL SIGNAGE
Allowing for ease of wayfinding through the site



CORTEN STEEL DIRECTIONAL SIGNAGE
Allowing for ease of wayfinding through the site



SHELTERS / FACILITIES
To provide for the parks users

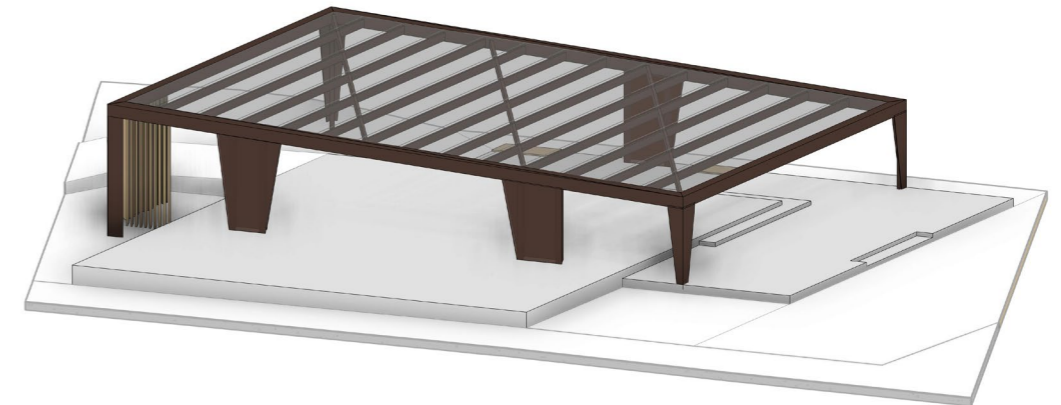
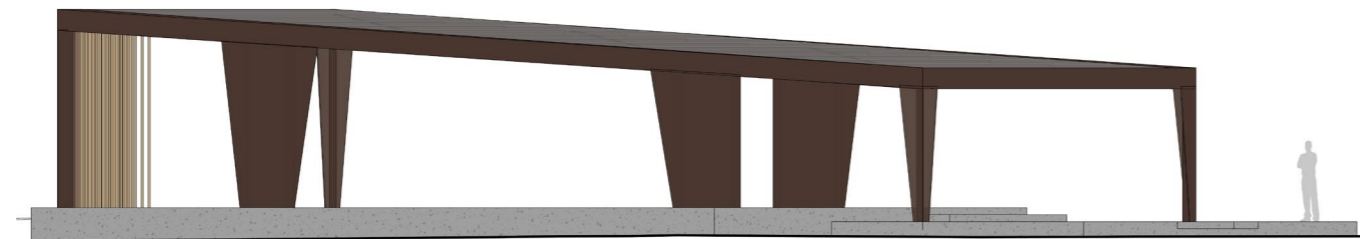


CAMPER WASTE FACILITIES
Cassette Toilet Disposal Point by Outer Space Pods

Performance Pavilion:

The stage and its protective pavilion is an integral feature of the central performance and event area. It provides shelter from the elements for the potential uses within the stage performance pavillion and gives the stage space vertical presence within the site. Screening located along the long edges of the structure is positioned to provide support while also creating hideaway spaces along the stage edge.

The proposed overhead filtered glazing will allow natural light into the space below. Unlike the facilities shelters, the glazing tints are proposed to be uniform in tone.

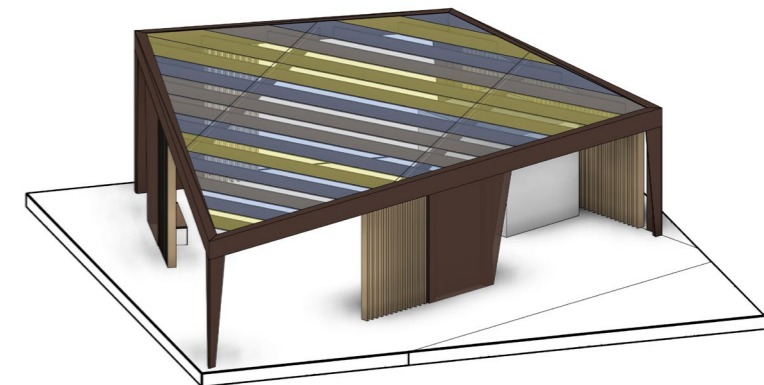


Facilities Shelters:

The facilities shelters are located within the active spaces of the site. One at the southern entrance to the site near the existing carpark and proposed overnight camping area, the other near the northern entrance of the site between the exiting playground and skate park spaces.

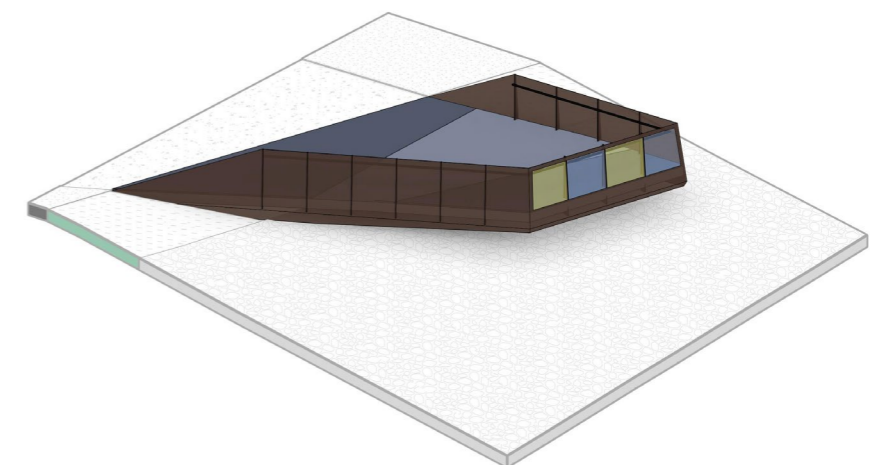
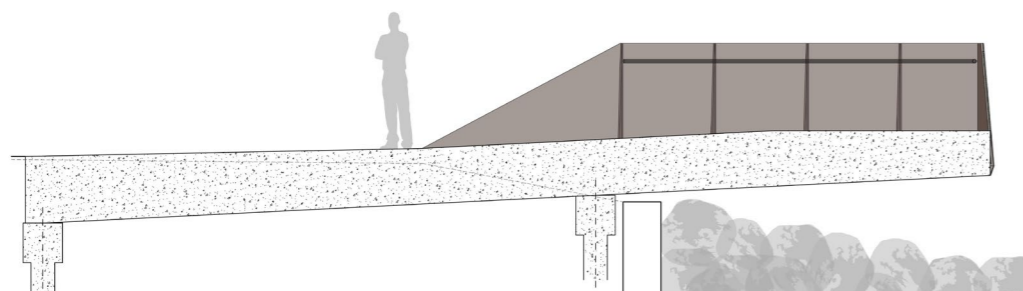
Both shelters have a proposed self-cleaning toilet facility that sits within its foot print. The shelter structures have been designed to provide refuge from the elements for the park users, with weatherproof overhead cover and windscreen panels sheltering against the prevailing southwest wind.

The proposed overhead filtered glazing will to allow natural light into the space below. There is an opportunity within the glazing tints to introduce colours that are both playful and representative of the tones of the coastline.



Viewing platforms

The cantilevered platforms reach out over the rock revetments for clear views of the sea. Located at key positions where the sites active spaces meet the coastal edge, they provide unique spatial opportunities within these active nodes. Glazing within the outer cladding provides open viewing opportunities for users with lower sight lines.



Note: Refer to included sheets 24272-2-901,911,921 for additional detail.

PLANTING PALETTE

Park Trees

Native coastal tolerant trees will be used to compliment the site, giving vertical elements within, acting as shelter, shade and habitat within the park.



Tree Groups



Screening

Planting along the recycling plant and fence should be dense and a larger height to screen this from the site. This boundary will be dynamic, consisting of a mix of unique topography as well as taller species

For more exposed coastal locations



For more sheltered coastal locations



Coastal Strip

The coastal strip will feature low-lying, resilient plants adapted to the coastal environment. Arranged in patches within a stone garden along the promenade, this planting will be entirely native.



Sensory

Coastal sensory planting inspired by the shingle beach, blending textured grasses, aromatic herbs, and edible natives, offers immersive experiences of touch, taste, smell, and sound. Sheltered subspaces invite exploration and tranquility amid the coastal breeze.



Wildflower

A wildflower haven teeming with native blooms creates a vibrant tapestry of colors, scents, and textures. This dynamic space supports pollinators and invites visitors to connect with these natives beauty.



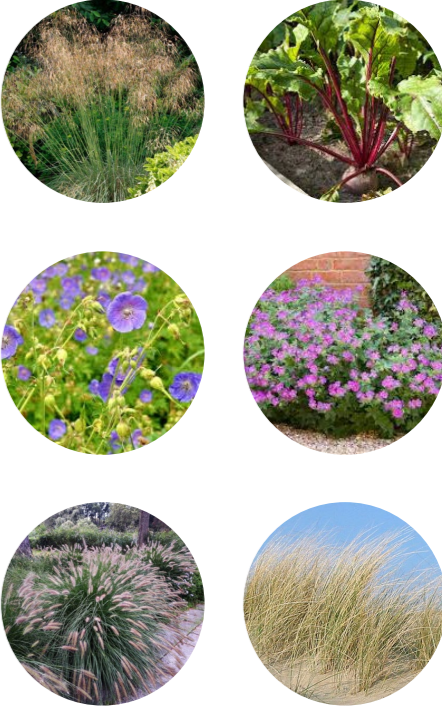
Ornamental Planting

Within the linear park should have a mix of naturalized and ornamental planting. The species used at the entrances could mimic planting along the River Vantry and within the Murrough Wetland to link them both through the park.

SEASIDE



TOWNSIDE



Park Trees

- Acer pseudoplatanus (Sycamore)
- Pinus sp. sylvestris (Scots pine)
- Pinus nigra nigra (Black Pine)
- Quercus robur (Oak)

Tree Groups

- Salix cinerea (Grey Willow)
- Sorbus aucuparia (Mt Ash / Rowan)
- Sorbus aria (Whitebeam)
- Populus x canescens (Grey Poplar)

Screening

- 10% Ilex aquifolium (Holly) *
- 15% Prunus spinosa (Blackthorn)*
- 10% Sanbuscus nigra (Elder)*
- 10% Salix cepens (Creeping willow)*
- 10% Salix cineren (Grey willow)*
- 20%Crataegus monogyna (Hawthorn)
- 5% Corylus avelana (Common hazel)
- 5% Rosa canina (Dogwood)
- 10% Ligustrum vulgare (Wild privet)
- 5% Viburnum opulus (Guelder-rose)
- *For more exposed coastal locations

Sensory

- Stipa gigantea (Giant feather grass)
- Stipa tenuissima (Mexican feathergrass)
- Lavandula angustifolia (Lavender)
- Crambe maritima (Sea Kale)
- Thymus (Thyme)
- Salvia rosmarinus (Rosemary)
- Pelargonium crispum (Lemon Scented Geranium)
- Stachys byzantina (Lambsear)
- Pennisetum alopecuroides (Chinese Fountain Grass)
- Verbena bonariensis (Purpletop Vervain)
- Beta vulgaris (Beet)
- Armeria maritime (Sea thrift)

Wildflower

- Anthyllis vulneraria (Kidney Vetch)
- Anacamptis morio (Green winged Orchid)
- Hypericum perforatum (St Johns Wort)
- Erica cinerea (Bell heather)
- Tripolium pannonicum (Sea aster)
- Achillea millefolium (Yarrow)
- Leucanthemum vulgare (Oxeye daisy)
- Spergularia media (Greater Sea-spurrey)
- Valeriana locusta (Corn salad)
- Valerianq rimosa
- Limonium procerum (Sea-lavender)
- Daucus carota subsp. carota (Wild Carrot)

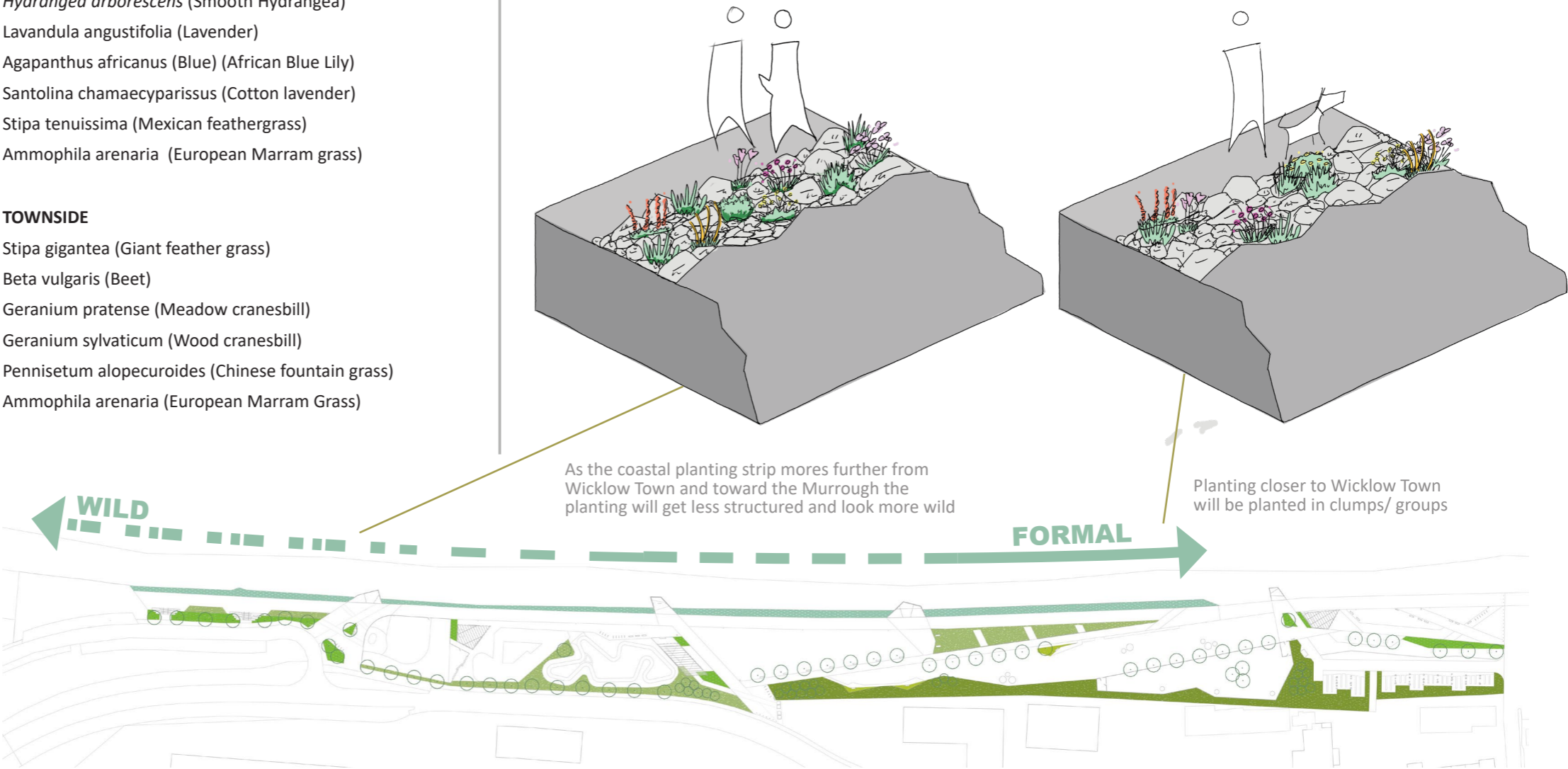
Ornamental Planting

- SEASIDE
 - Hydrangea arborescens (Smooth Hydrangea)
 - Lavandula angustifolia (Lavender)
 - Agapanthus africanus (Blue) (African Blue Lily)
 - Santolina chamaecyparissus (Cotton lavender)
 - Stipa tenuissima (Mexican feathergrass)
 - Ammophila arenaria (European Marram grass)
- TOWNSIDE
 - Stipa gigantea (Giant feather grass)
 - Beta vulgaris (Beet)
 - Geranium pratense (Meadow cranesbill)
 - Geranium sylvaticum (Wood cranesbill)
 - Pennisetum alopecuroides (Chinese fountain grass)
 - Ammophila arenaria (European Marram Grass)

Coastal Strips

- Anthyllis vulneraria (Kidney Vetch)
- Halimione portulacoides (Purslane)
- Armeria maritima (Sea Thrift)
- Silene uniflora (Sea Champion)
- Tripolium pannonicum (Sea Aster)
- Salicornia pusilla (One-flowered Glasswort)
- Rumex acetosella (Sheeps Sorrel)
- Euphorbia paralia (Sea Spurge)
- Foeniculum vulgare (Fennel)
- Cakile maritima (Sea Rocket)
- Honkenya peploides (Sea Sandwort)
- Beta vulgaris (Sea Beet)
- Crambe maritima (Sea Kale)
- Limonium procerum (Sea lavender)

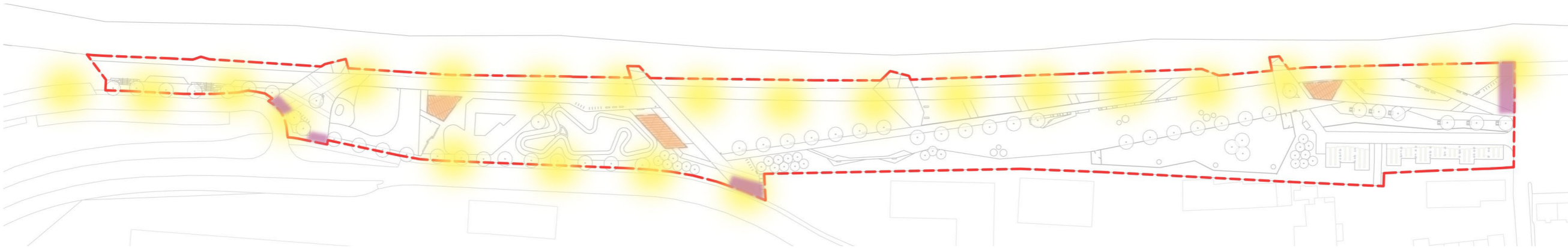
Note: Native spp to be of native provenance where possible.
All shrubs/trees to be coastally hardened off before planting out.
Where feasible existing local soil to be used to provide seed base.



LIGHTING STRATEGY

The lighting strategy reflects the following key principles and approaches:

- Additional lighting to be limited to as necessary to avoid conflict with the wildlife.
- The existing lighting columns along the promenade will be retained.
- Supplementary bollard lighting will be provided at entrance / exit points.
- The proposed shelters & pavillion will be lit by controllable / programmable recessed lighting in the canopy.



EXISTING POLE MOUNTED LIGHTING

The site currently features existing pole-mounted lights. These lights will continue to enhance visibility and safety complementing the installations.



BOLLARD MOUNTED DIRECTIONAL LIGHTING

Tanda Bollard (Symmetric & Assymmetric)

Supplier: Veelite
Product Code: 380

The Tanda Bollard is well-suited for the coastal conditions on Murrough due to its robust construction and high durability. Its **extruded aluminium housing and clear polycarbonate lens** provide excellent resistance to corrosion and impact. The bollard is **rated IP65**, ensuring protection against dust and water, and has high impact resistance ratings (**IK09 for sizes A&B, IK10 for size C**).



SHELTER INTERNAL FEATURE LIGHTING

Recessed Canopy Light

Supplier: Veelite
Product Code: 949

The Recessed Canopy Light is ideal for coastal environments due to its durable construction and high protection ratings. Its **die-cast aluminium housing with a stainless steel trim** ensures excellent resistance to corrosion. The light is **rated IP67 for sizes 1, 2, and 3, and IP65 for sizes 4 and 5**, providing robust protection against dust and water. Additionally, the tempered glass lens and high impact resistance (**IK07 for sizes 1, 2, and 3, IK10 for sizes 4 and 5**) make it well-suited to withstand harsh coastal conditions.

